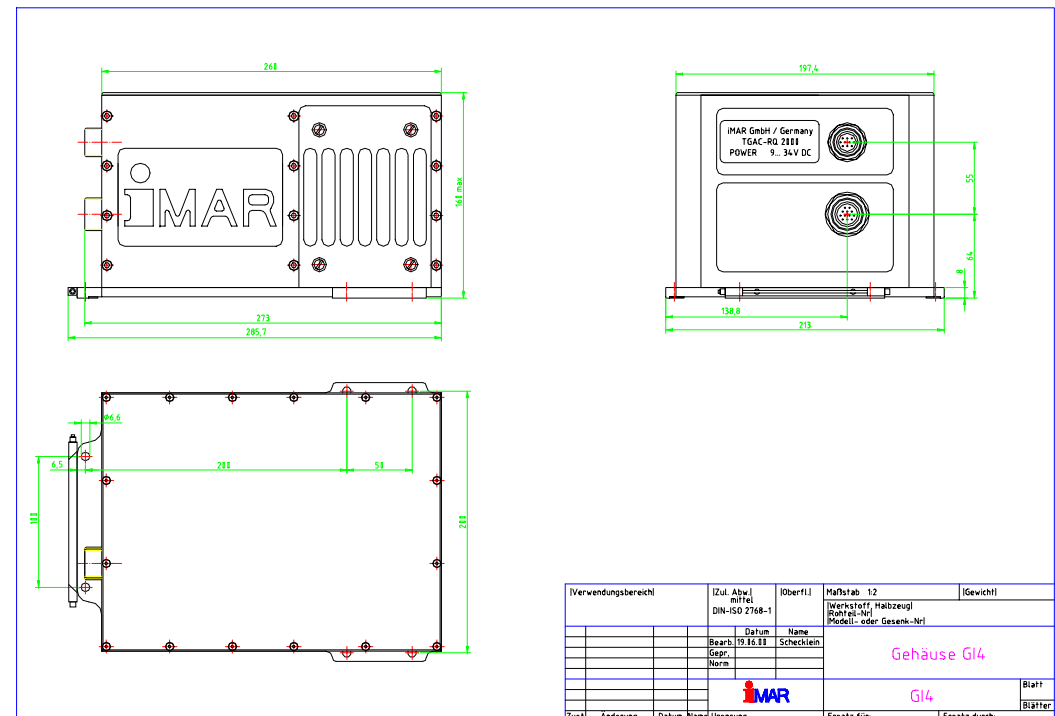


## iNAV-RQH: High Precision Ring Laser Gyro Inertial Measuring System



- Gyro performance 0.012/0.003/0.0018 deg/sqrt(hr).
- The standard housing is specified IP67, but not pressure resistant. Hard-/soft-mounting can be chosen.
- The connectors of type Amphenol PT are standard (type E) or hermetical sealed (type H) according to MIL-C-26482 and MIL-C-5015D.



### Applications:

- High Accurate Navigation and Guidance
- INS/GPS based Position/Attitude/Heading Reference
- True North Reference
- Stabilisation of Weapon Systems
- Most Demanding Surveying Applications